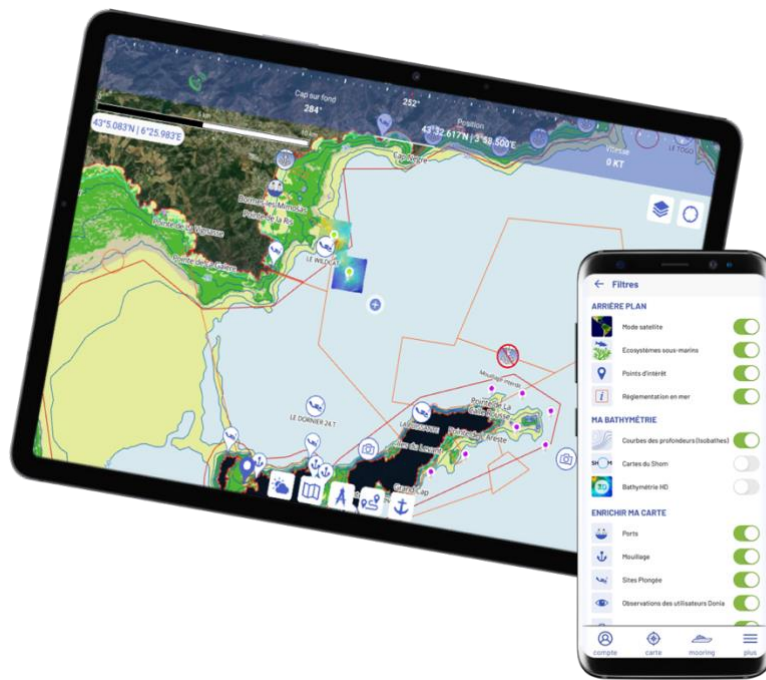




DONIA 6.0

INSTRUCTIONS



POUR TOUTES LES QUESTIONS RELATIVES À DONIA:

donia@andromede-ocean.com

JULY 2022

SOMMAIRE

1.	GENERAL	1
2.	DOWNLOADING THE APPLICATION	1
3.	OPENNING AN ACCOUNT	1
4.	CLOSING THE ACCOUNT	2
5.	PRIVACY	2
6.	FEATURES	2

6.1.	ACCOUNT	3
6.1.1.	MY INFO	3
6.1.2.	MY PARAMETERS	4
6.1.3.	MY MAPS.....	4
6.1.1.	MY SPOTS	4
6.1.2.	MY CONTACTS	5
6.1.1.	MAILBOX.....	5
6.1.2.	MOORING BOOKINGS.....	5
6.2.	MORE.....	5
6.2.1.	SOS ALERT.....	5
6.2.2.	MAPS LEGEND.....	6
6.2.3.	MANUAL.....	6
6.2.4.	ABOUT.....	6
6.2.5.	PARTNERS.....	6
6.3.	FILTERS	7
6.4.	MOLOCK MODE	11
6.5.	MAP FEATURES	11
6.5.1.	PUBLISH	12
6.5.2.	WEATHER.....	12
6.5.1.	MY MAPS.....	13
6.5.1.	MEASURE.....	14
6.5.1.	RECORDING YOUR ROUTE.....	14
6.5.2.	ANCHOR	14
6.6.	DONIA MOORING	15

1. GENERAL

Posidonia (PosiDONIA oceanica (L.) Delile) is a protected flowering plant that lives only in the Mediterranean Sea (endemic species). In France, the posidonia meadows cover 34% of the seabed along the continent and 66% along Corsica between 0 and 40 m depth. Despite protection measures, the meadows are threatened by human activities even though they provide us with many goods and services. In the Mediterranean basin they have lost 10% of their surface area over the last 100 years. In France, the loss in goods and benefits is estimated at more than four billion euros each year.

The anchoring of boats is responsible for physical damage to Posidonia meadows ([video: "The impact of anchoring on Posidonia meadows"](#); [Mooring monitoring booklet](#)). Larger the vessel is, heavier the anchor is and longer the chain is. The impact on the seabed is therefore likely to be greater for large vessels.

Faced with this observation, Andromède Océanologie created DONIA in 2013, in partnership with the Rhône Méditerranée Corse Water Agency. **It is a community application for navigation and anchoring assistance outside fragile ecosystems** such as underwater seagrass beds (posidonia, cymodocea, eelgrass) and coralligenous reefs. It can be **downloaded free** of charge from the [Android](#) and [Apple](#) stores, and allows all boaters, fishermen, divers and yacht captains to position themselves in relation to the nature of the seabed and to anchor outside seagrass beds, **in compliance with the law**. Indeed, PosiDONIA oceanica is legally protected in many Mediterranean countries, including France.

Since 2019, a regulatory framework defining the conditions for anchoring and stopping vessels off the French coast has been drawn up through a [framework order of the Maritime Prefect n°123/2019](#). **DONIA is the simplest and most operational solution to avoid infringement and to protect the meadows.**

2. DOWNLOADING THE APPLICATION

The DONIA application can be downloaded free of charge from the [Apple Store](#) (IOS) and [Google Play](#) (Android) platforms. It is available and usable with a smartphone or a tablet. It uses the phone's internal GPS to locate your boat.

DONIA works without a 3G or WIFI connection except when downloading maps and for community functions.



3. OPENNING AN ACCOUNT

Once you have installed the DONIA application, you can create your account:

- Open the DONIA application on your smartphone or tablet;
- Create your account by entering the required login information (login, email address, etc.);
- Validate the T&C/GU (you can consult them by clicking on the menu "About / T&C/GU");
- Validate the following message: "No official hydrographic service has verified the information contained in this document and cannot be held responsible for the accuracy of its reproduction or for any subsequent modification. Possession of this derived product does not relieve the user of the obligation to use the appropriate nautical documents provided for by national or international regulations. This applies to all data contained in the DONIA application;
- Validate your registration;

Follow the launch instructions to discover the application (you can review them at any time in the dedicated menu on the application (My profile / Instructions for use) and on the website).

4. CLOSING THE ACCOUNT

To delete your DONIA user account, simply go to the "My Info" section and click on "I want to delete my account".

The following data is kept for as long as the user is registered on the DONIA platform, i.e. until he/she unsubscribes: user profiles, user sharing features, user registration and identification, processing related to the maintenance of the application.

5. PRIVACY

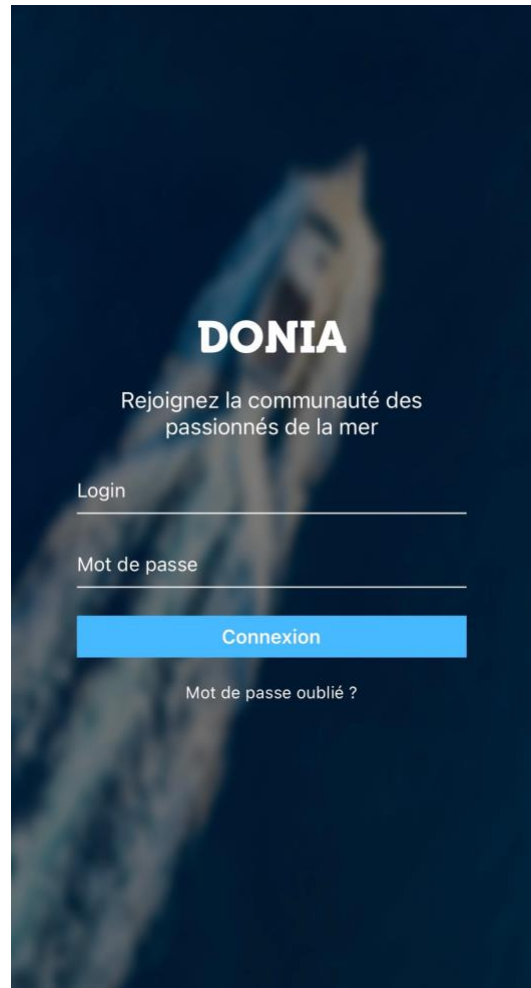
To set your user account to invisible mode, go to Account - My Profile - then check "Become Invisible". This activation allows you to :

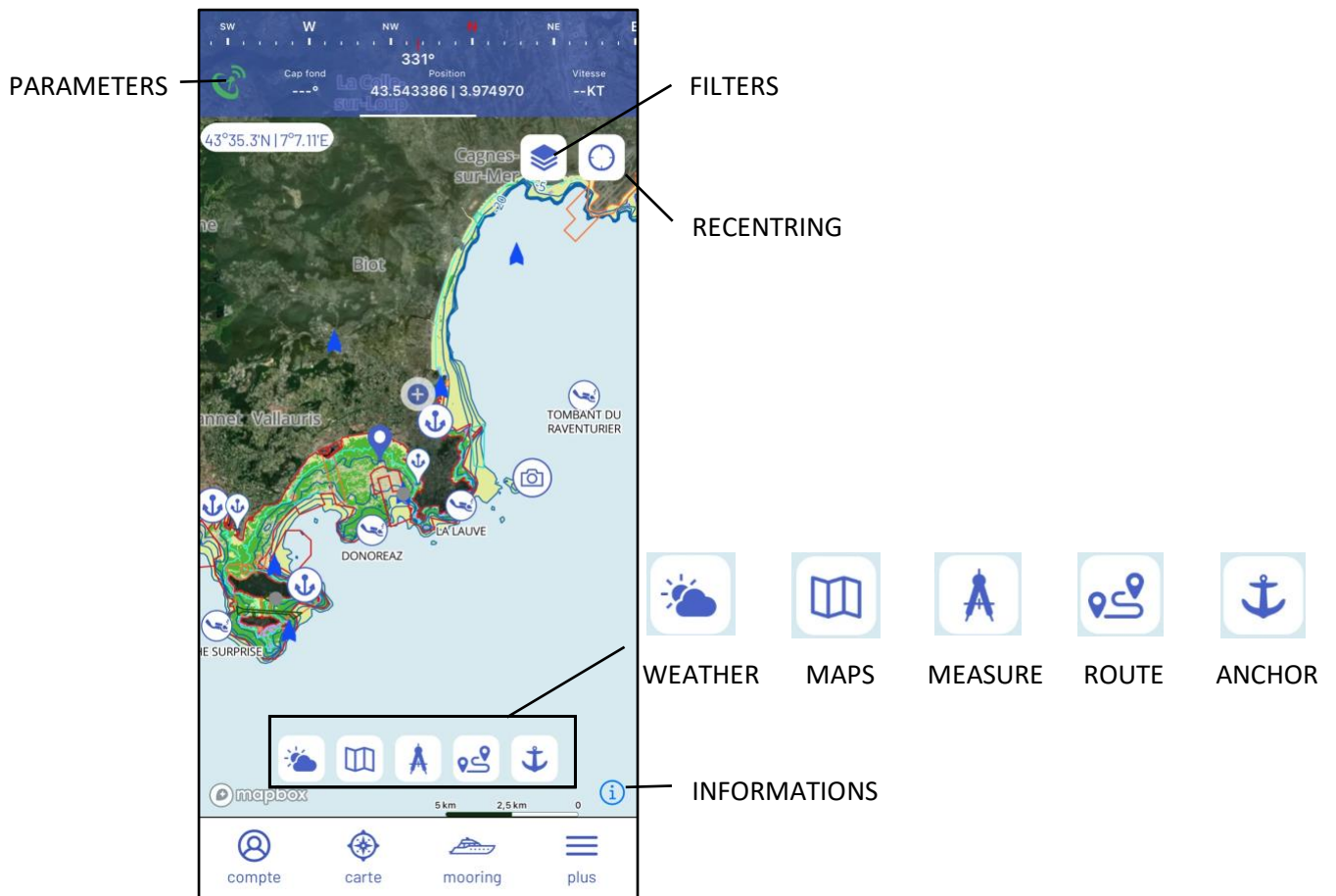
- No longer appear on the map,
- Not to be contacted by other users including your friends (see 6.1.2. My contacts)
- No longer use the community functions.

You will be visible again the next time you open the application. This data relating to the location of users for navigation and marine activities is kept for the duration of each connection of the user who uses the geolocation service. When the user is no longer connected to the application, his/her location data is not known; however, all his/her previous location data for navigation and marine activities is kept for an unlimited period of time by applying an anonymisation process.

6. FEATURES

Several buttons are available on the main screen: Menus, Refocus, Filters, Features.





6.1. ACCOUNT



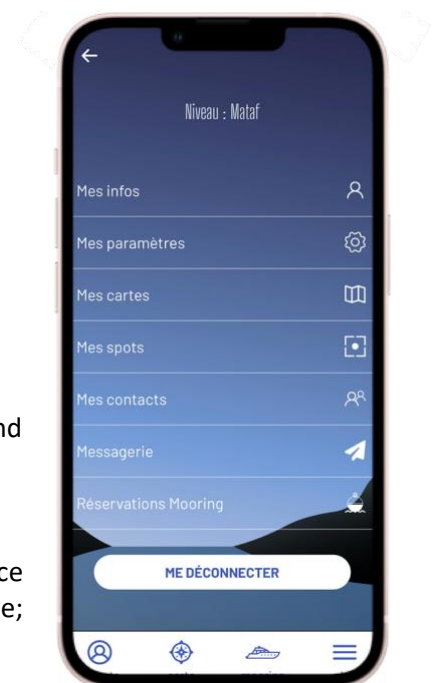
The "account" menu consists of the following tabs:

My info - My parameters - My maps - My spots - My contacts - Mailbox - Mooring bookings

6.1.1. MY INFO

In "My info", you can manage your personal data.

- Your boat model (catamaran, sailboat, yacht, etc.), its name and length
- Your user name (it will be used for your publications) and e-mail
- Your personal data (home port, activity)
- Your subscription code number for those who have a licence (company code, Premium account, professional licence; <https://donia.fr/tarif/>)
- The possibility to "Become invisible" (see Privacy)

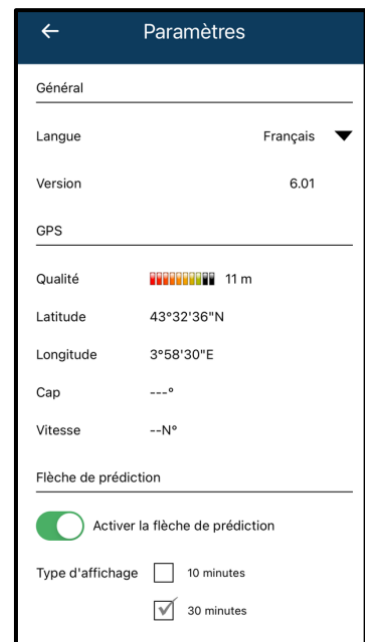


You can retrieve your personal data by email.

6.1.2. MY PARAMETERS

In **"My parameters"** you can change the language of the application (English, French, Italian, Spanish). You can also view your GPS data, signal quality, heading and speed.

The "Prediction Arrow" tool allows you to calculate and display in real time the user's predicted position in 1 hour according to his speed and heading. This display involves adding a prediction line on the map. It is possible to adjust the display of the user's predicted position in 10 minute or 30 minute increments.



6.1.3. MY MAPS

In **"My maps"** you can download the navigation areas you want to use without an Internet connection. If you are a Premium subscriber you can also download the SHOM charts of the corresponding area. You just have to position the chart on the screen on the desired zone(s) and not to leave the application during the download (which can take a few minutes). A tab allows you to see all the downloaded areas, update them and delete them.

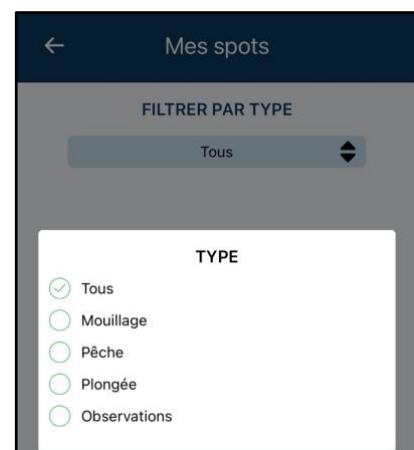
6.1.1. MY SPOTS

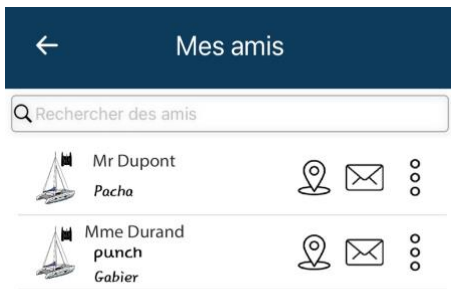
In **"My spots"**, you have access to the data of your observations or your spots.

As soon as you share a piece of information, it is added directly in the corresponding type: Anchoring, Fishing, Diving, Observations, Waypoint.

You can then easily find your publications, review your photos, GPS coordinates, as well as the note you gave to this spot.

You can easily return to your favourite fishing, diving or boating spot.





6.1.2. MY CONTACTS

In "**My contacts**" you can search for friends, see pending friend requests and access your friends list. At any time, you can delete or block one of our friends.

By clicking on one of your friends, you can locate him/her and thus easily find him/her at sea, and/or contact him/her through the messaging system of the application.

6.1.1. MAILBOX

Find all your conversations with the community in "**Mailbox**".



6.1.2. MOORING BOOKINGS

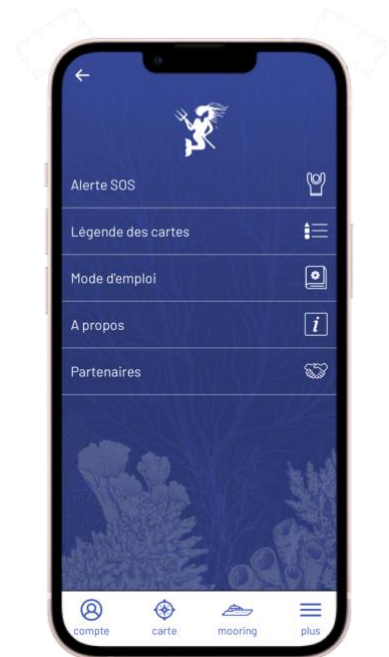
In "**Mooring bookings**" view your current reservations or cancellations and pay for pending reservations. When a booking has been made, this is where you will have access to the lock to lock and unlock the device.

6.2. MORE

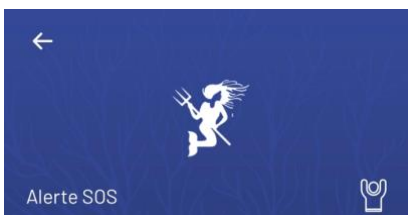


The "**more**" menu consists of the following tabs:

SOS alert - Maps legend - Manual - About - Partners



6.2.1. SOS ALERT



In "**SOS Alert**" you can view the alerts issued in your vicinity.

To send an SOS alert to all users of the application connected within a radius of 20 km of your position, click on the **SOS button** in the "more" menu. You can write your alert message and note your phone number. On the main screen, to the left of the navigation bar, the signal strength is displayed from red to green.

6.2.2. MAPS LEGEND

In the "**Map Legend**" you will find the colour code of the marine habitats:

- Yellow = Sand
- Green = Seagrass
- Brown = Dead matte
- Purple = Rock

The rocky dry areas and isobaths are also indicated.

With this data, you can anchor safely, while protecting the environment.

Also shown is the legend for special sites, AIS data, and regulations at sea.

6.2.3. MANUAL

Download these instructions for use here

6.2.4. ABOUT

The "**About**" menu gives you access to three tabs:

- In "DONIA", you can access more information about the application, Andromède Océanologie, and the Posidonia meadows;
- In "Credits", you will find information about the creation of the application, the cartographic data and the publishing company Andromède Océanologie,
- Under "Terms and Conditions", you can read the information relating to DONIA's general terms and conditions of use and sale that you accepted when you registered.

6.2.5. PARTNERS

The "**Partners**" menu will take you to the DONIA website to the page of the same name to introduce you to our trusted partners who support us in running DONIA.



6.3. FILTERS



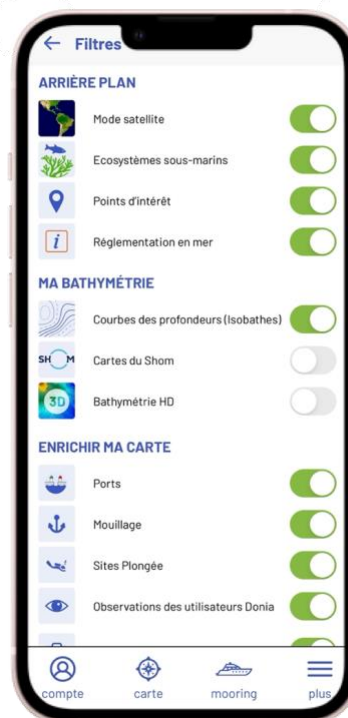
This button allows you to display / hide from the map about fifteen layers that are visible on your map. Most of them are available on the basic version of the application, the others are only available with the Premium version of DONIA (in red below).

Background: Satellite images, Underwater ecosystems, Points of interest, Regulations at sea

My Bathymetry: Depth curves (Isobaths), **SHOM charts**, **HD Bathymetry**

Enrich my map: Ports, Anchorages, Diving sites, DONIA users' observations, Underwater photographs

My boats: DONIA boats, AIS boats, My community



Arrière-plan



➤ **Satellite mode:** The user can choose to display satellite images as a background map;



➤ **Marine ecosystems:** The maps available in DONIA show the distribution of habitats (seagrass, sand, dead mat, rock) between the surface and 50 metres depth. They correspond to the latest data updated by Andromède Océanologie in the context of recent studies, but it is possible that there are still errors or that the location of habitats has changed over time. Do not hesitate to contact us at donia@andromede-ocean.com with GPS coordinates (or screenshot).



➤ **Points of interest:** this layer indicates the names of capes, and points of interest along the coastline such as the Genoese towers in Corsica;



➤ **Regulations at sea:** This layer includes **regulated areas** for anchoring, diving, navigation; **anchorage areas**; **marine protected areas** (parks and marine reserves); **conservation areas**; fishing blocks; **areas prohibited** to fishing, underwater hunting, traffic, anchoring, diving;

My bathymetry



➤ **Depth lines (Isobaths):** The depth curves (Isobaths) are visible down to -50 metres. Rocky shores, identified from SHOM data, are displayed on the map;



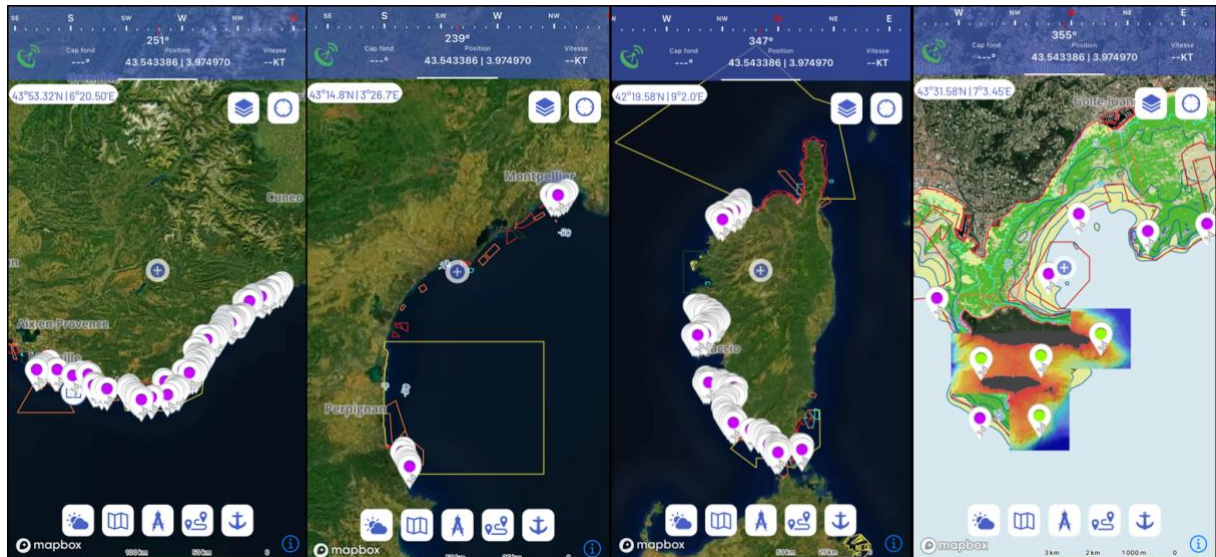
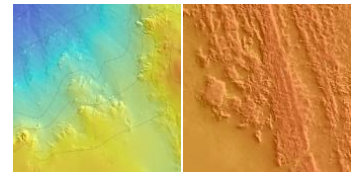
➤ **SHOM charts:** The visualisation of SHOM (Service Hydrographique et Océanographique de la Marine) charts in the French Mediterranean is a feature available in the Premium version of DONIA.



➤ **HD Bathymetry:** The visualisation of bathymetric slabs is a feature available in the Premium version of DONIA. This button allows the location of high resolution 3D bathymetric charts to be displayed on the map to find new points of interest.



230 slabs are located in the Southern Region between Marseille and Nice, and in Corsica (West and South); a few slabs are present in the Occitanie Region (see following maps).

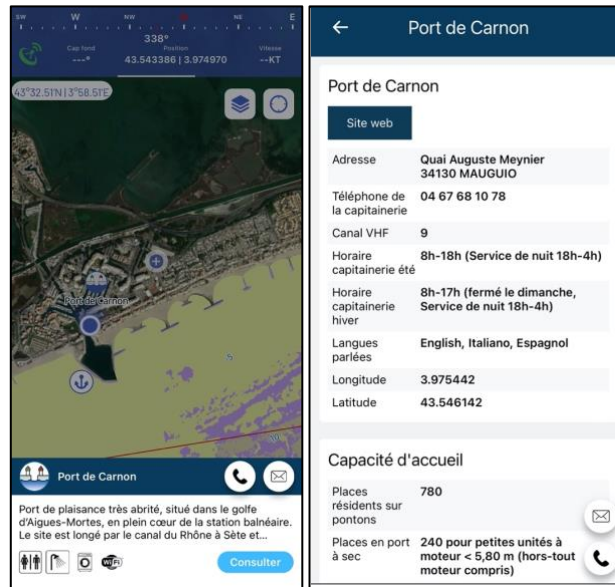


Enrich my map

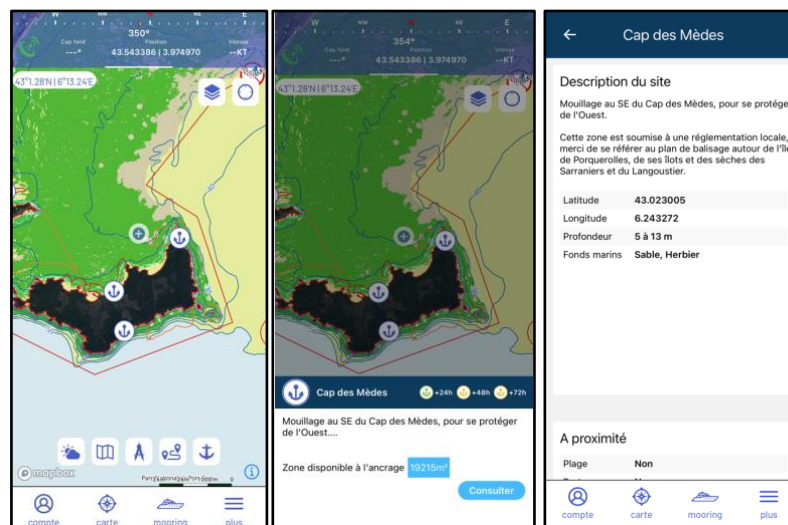


➤ Harbors:

180 harbors are displayed on the map. You can click on the port, call it or contact it by e-mail, as well as obtain a brief description of it and the main services (WC, showers, laundry and WIFI). The "Consult" button gives you access to a complete description of the port (telephone and e-mail address of the harbour master's office, description of the port, VHF channel, languages spoken etc.).

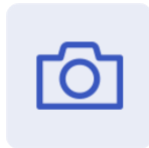
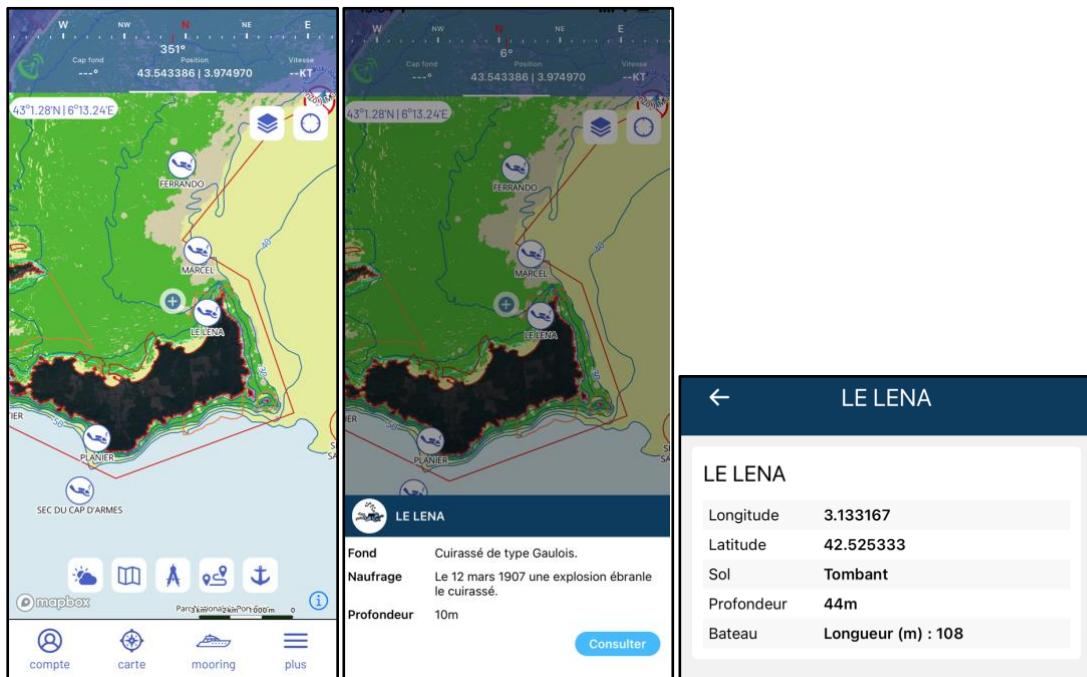


➤ **Anchoring: 400 anchorage areas** have been targeted on a sandy bottom along the French Mediterranean coast. You can click on the anchorage area and obtain information such as a description of the site, the available anchorage area (in m²), photographs, nearby services (beach, port, restaurant, supplies) and anchorage conditions in relation to the weather: 24, 48 and 72 hour forecasts of wind and swell enable the anchorage area to be classified as sheltered (green), subject to wind and/or swell (yellow) and exposed (red).).

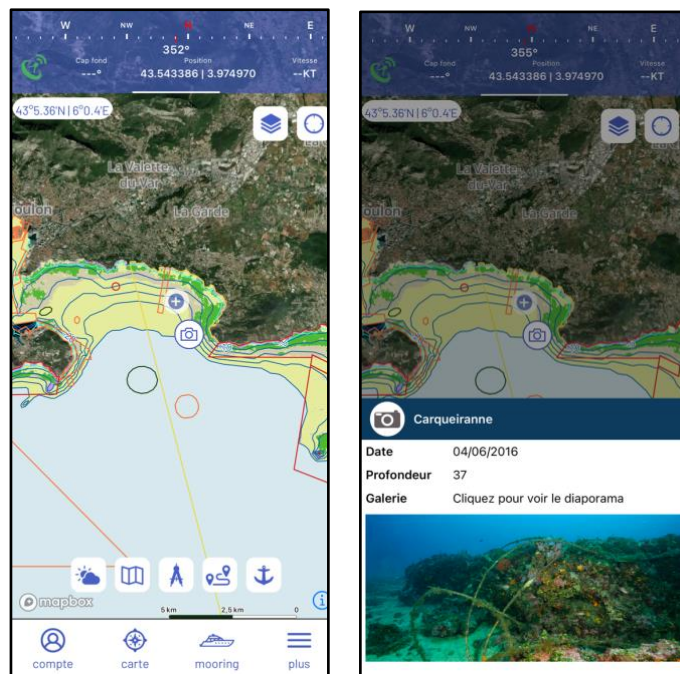




➤ **Dive Site:** 330 dive sites are displayed on the map. You can click on the site and get the following information: name of the site, nature of the bottom, characteristics of the wreck, type of substrate and depth.



➤ **Underwater photography:** Hundreds of georeferenced photos are available. These underwater landscapes and species are illustrated by Laurent Ballesta. You can view the photos in small or large format..



➤ **Observations from DONIA users :** All observations shared by the community (6.5.1. My Spots).

My boats

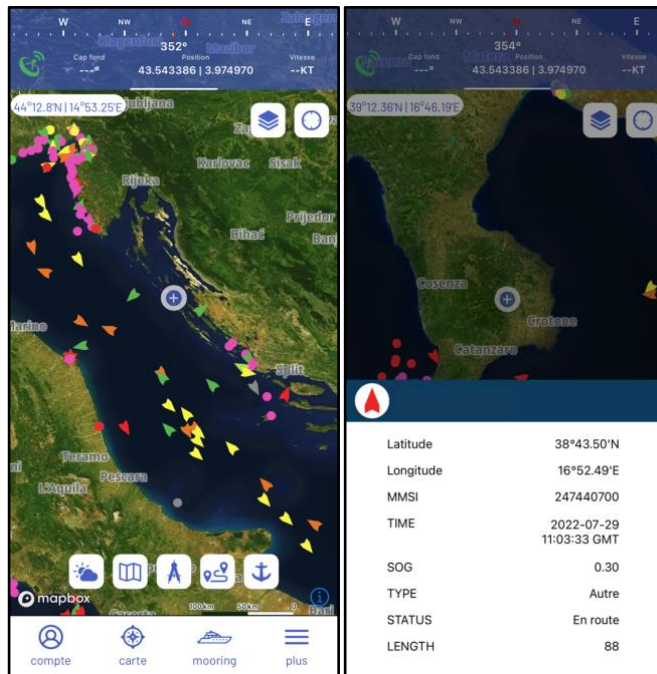


- **DONIA boats:** You can display all DONIA users who are connected in real time.



- **AIS boats:** You can display all boats equipped with AIS (Automatic Identification System) differentiating between those at sea or anchored and the different types of boats (legend below). The AIS data comes from the AISHub network (<http://www.aishub.net/coverage>). (<http://www.aishub.net/coverage>).

By clicking on a boat, we obtain the following information: latitude, longitude, registration (MMSI), date and time, speed (SOG), type of boat, status, length:



- **My Community:** This feature allows you to display all the boats in your community.

6.4. MOLOCK MODE



This button allows you to activate the lock mode to keep your vessel in the centre of the map during navigation..

6.5. MAP FEATURES

Several features are available from the map. First of all, the publish button in the centre of the screen, then, on the bottom strip, the buttons: Weather - My maps - Measurements - Anchor

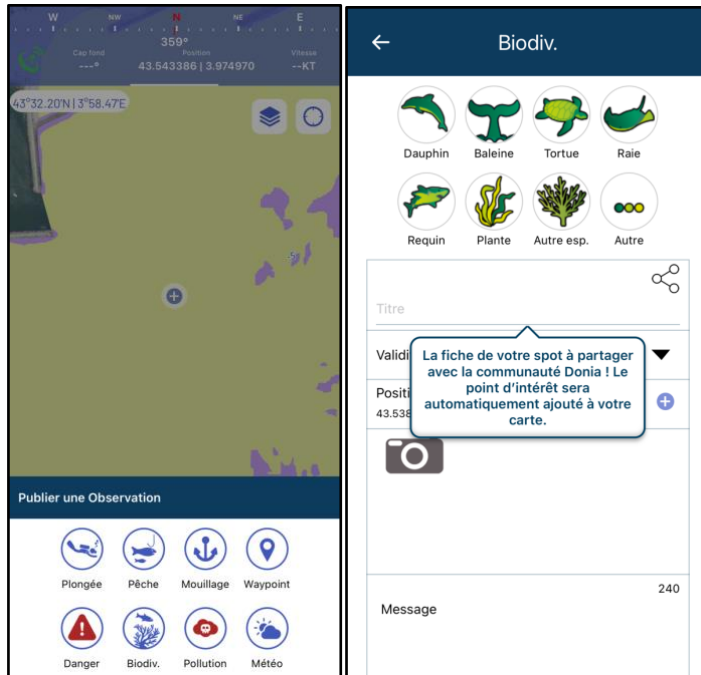


6.5.1. PUBLISH



When you click on the "**Publish**" button, you can post your observations (shared spots) for the community.

Simply select the type of sighting you wish to share (Scuba diving, fishing, anchoring, waypoint, danger, biodiversity, pollution, weather).

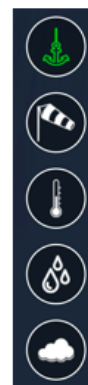


Clicking on the icon opens a new window: this is where you fill in a spot with title, duration of display (validity), location, photo, message and rating. You can choose whether your spot is visible to the whole community or only to you.

6.5.2. WEATHER



DONIA integrates a French global atmospheric forecast model. These simulations are produced by the numerical forecasting model ARPEGE. It integrates a point every 10 km. The forecasts concern the following parameters with a forecast every 3 h until h + 72h.



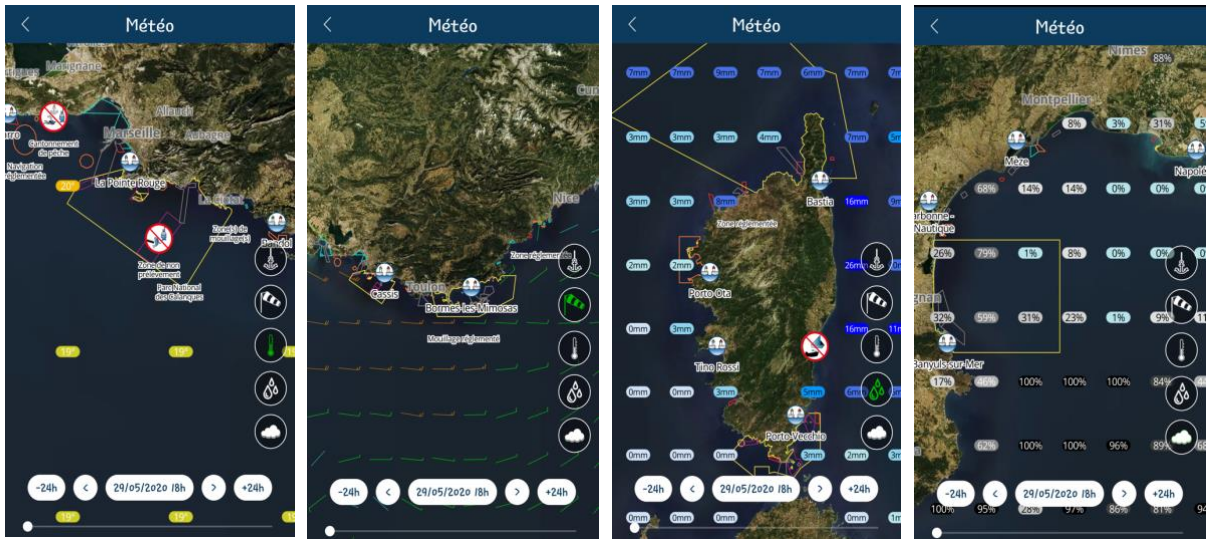
Zone d'ancrage

Vitesse et orientation vent à altitude 0

Température

Pluviométrie

Couverture nuageuse



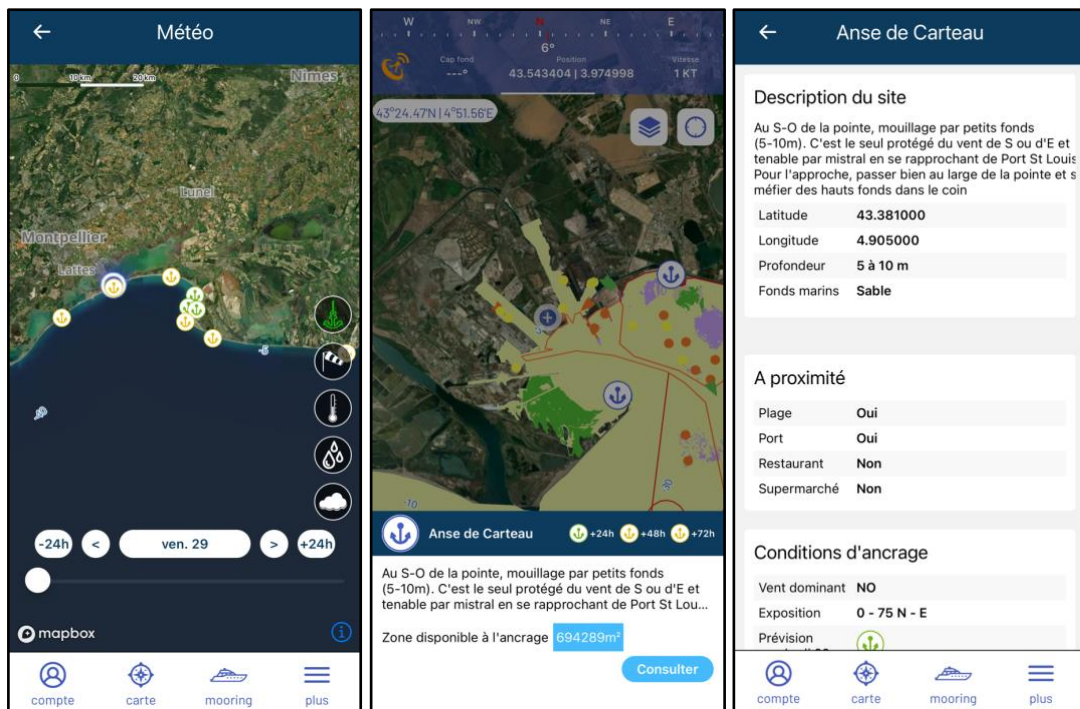
TEMPERATURE

WIND

RAINFALL

COVER RAINY

The 24, 48 and 72 hour wind and swell forecasts classify the anchorage areas as sheltered (green), subject to wind and/or swell (yellow) or exposed (red).



6.5.1. MY MAPS

This icon gives you access to a shortcut to the page where you can download the cards in the Account - My maps.

6.5.1. MEASURE



The "**Measure**" button allows you to dynamically add points on the map and between these points. You can manipulate (drag and drop or delete) existing points, delete all points or remove the last point added. Calculation of the total distance of the measurement.

6.5.1. RECORDING YOUR ROUTE



You have a button "**Record your route**" which allows you to **start and stop the recording of your route**. After recording, the track is coloured according to a gradient from green to red representing your speed on this track (the more the section is red the more you approach the maximum speed on the track). Information about the time, distance, average speed and maximum speed of the course is displayed in real time. The boat track is also displayed in real time on the map.



6.5.2. ANCHOR

The '**Anchor**' button allows you to anchor outside of sensitive ecosystems. A pack of skid, tangle and collision alarms is also available. **Safe anchoring is provided at this stage:**



Bateau rouge, impact fort et risqué (mouillage sur l'herbier)



Bateau orange, impact moyen (mouillage sur la matie ou les roches)



Bateau vert, votre impact est faible et plus sûr (mouillage sur le sable)



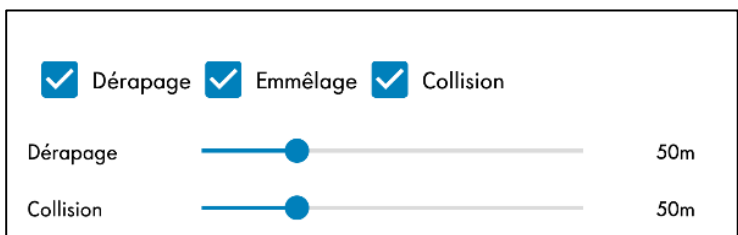
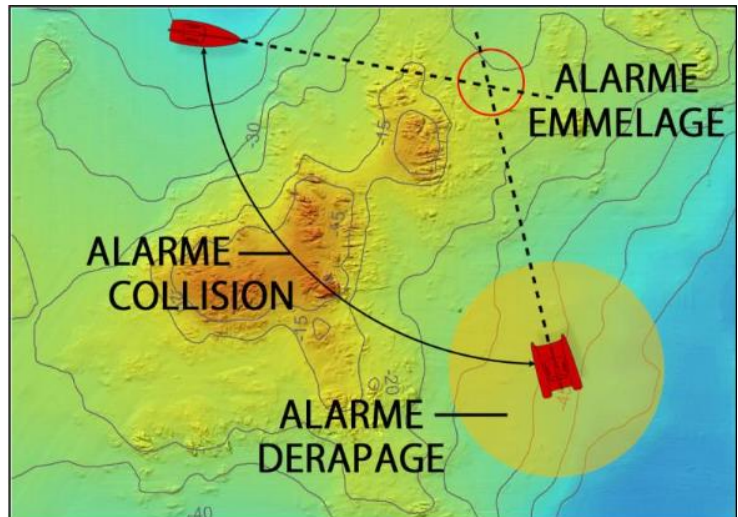
Bateau noir, substrat non connu sous votre bateau



You can activate the skid, tangle and collision alarms for added safety. You can set the distance at which you want to be warned of a skid or collision up to 50 metres.

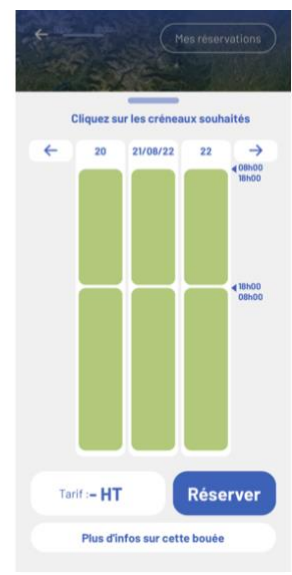
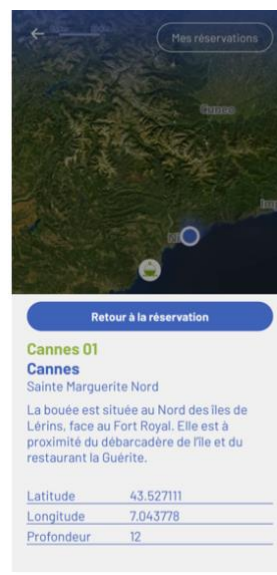
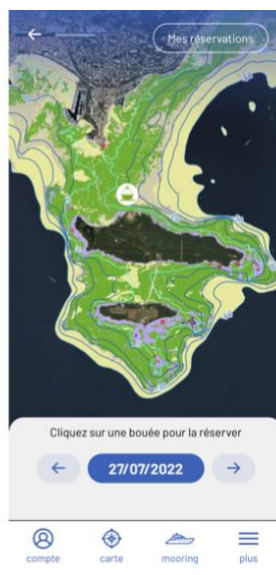
For example, if you activate the collision alarm at 50 metres and another DONIA boat enters the area, the alarm will be triggered. If the boat leaves the area, the alarm will automatically stop.

You have the possibility to activate an **e-mail alert** for these alarms, provided you have an internet connection.



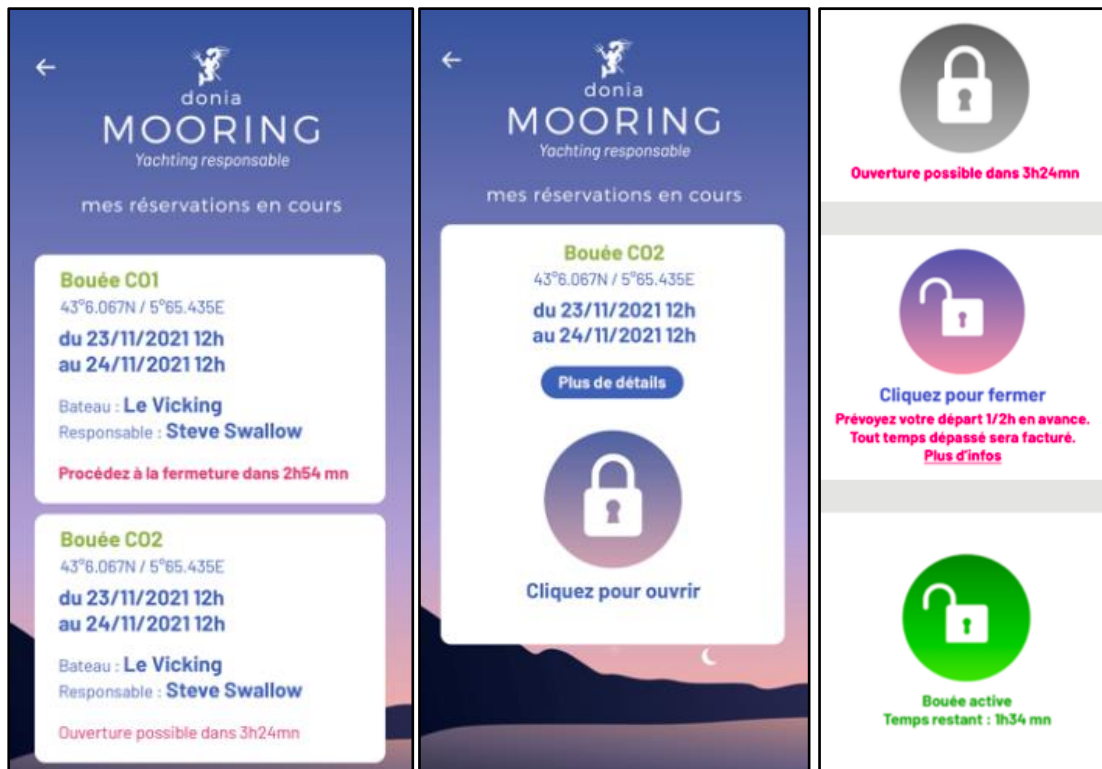
6.6. DONIA MOORING

This button gives access to the **Mooring buoy booking module**. On this page, you can consult the available mooring boxes, the booking schedule and the corresponding characteristics in real time. After entering your search area, the desired book date and the length of your vessel, the available buoys appear on the map. You can then access the characteristics and the schedule in order to register your desired slots and find out the price. Once you have selected the slots, you can click on "**Book**". You will be asked to fill in a number of fields and you will be able to read the general terms and conditions of sale. Once accepted, you will be able to validate your booking and will have **10 minutes** to proceed to payment. Your booking will be visible in the tab account - Mooring bookings.



A **countdown** will appear to show you how much time is left before the buoy can be opened. When your slot is active, simply **press the padlock** on the screen to open the buoy and dock. The box will appear as open on your smartphone and the booking time will be displayed. For the closing of the

buoy, it is advisable to plan your **departure half an hour in advance**, any overrun being charged. In the event of a delay in closing the buoy as well as in the event of its non-release at the agreed time, the Hirer will be liable for a fixed non-dischargeable penalty of €5 excluding VAT per minute of delay. Once the rope has been removed, you will need to **padlock** the padlock by clicking on the padlock visible on your smartphone in the "my current bookings" tab.



HOW TO BOOK

Access to Mooring

The booking module is available via the **DONIA application**. Once you have entered your informations, start the research.

Visualise the buoys

Results of your research are displayed on the map. You can click on the buoys that are available.

Features

It is possible to **display the characteristics** of each buoy, their advantages, exposures, GPS coordinates etc.

Booking

Once you have found your buoy, simply click on it to book it.

Payment

After filling in the form and accepting the T&Cs, your booking is **pending payment** and will be cancelled if not validated within 10 minutes. All you have to do is to confirm and enter your payment details to block the booking.



USE OF THE BUOY



STEP
1

Open the buoy

In the **DONIA Mooring module**, click on the padlock in the "my current booking" tab to activate the automatic opening system. You will not be able to click on it until the beginning of your booking.



STEP
2

Mooring

Once the loop is accessible, you will be able to dock. The padlock will appear as **open** on your smartphone and the remaining time before the end of your booking will be displayed.



STEP
3

Close the buoy

It is recommended to undock **half an hour in advance**, as any overrun will be charged 5€ excl. tax/min. delay. Once the rope has been removed, you will have to **lock the buoy** by clicking on the padlock.



donia

MOORING

For any question or additional information, please contact:

Jo-Ann SCHIES

joann.schies@andromede-ocean.com

04 67 66 32 48

**DISCOVER DONIA, THE APPLICATION THAT HELPS YOU ANCHOR WITHOUT DAMAGING THE SEABED!
ANCHORING IN POSIDONIA MEADOWS IS PROHIBITED BY LAW.**

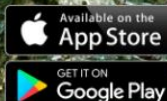


DONIA
ENJOY & PROTECT THE SEA TOGETHER

FREE access to the
mapping of
posidonia
meadows and
REGULATED areas
for safe mooring!



Scan me !



More than 40 000 users have
already chosen DONIA, what
about you?



NAVIGATION: HEADING, AVERAGE SPEED,
DISTANCE MEASUREMENT, ETC.



ENVIRONMENT: NATURE OF THE SEABED
(ROCK, SEAGRASS, SAND, MATTE), HELP FOR
ANCHORING OUTSIDE THE POSIDONIA
MEADOWS



WEATHER FORECAST : D+3, FILTERING
OF SHELTERED ANCHORAGES



SAFETY: ANCHOR ALARMS, SOS,
LOCAL REGULATIONS, POSITION OF
LARGE UNITS



BATHYMETRY: MORPHO-BATHY HD
MAPS, SHOM MAPS



COASTAL GUIDE: PORT,
ANCHORAGES, DIVING SITES, ETC.



DONIA MOORING : BUOY BOOKING

